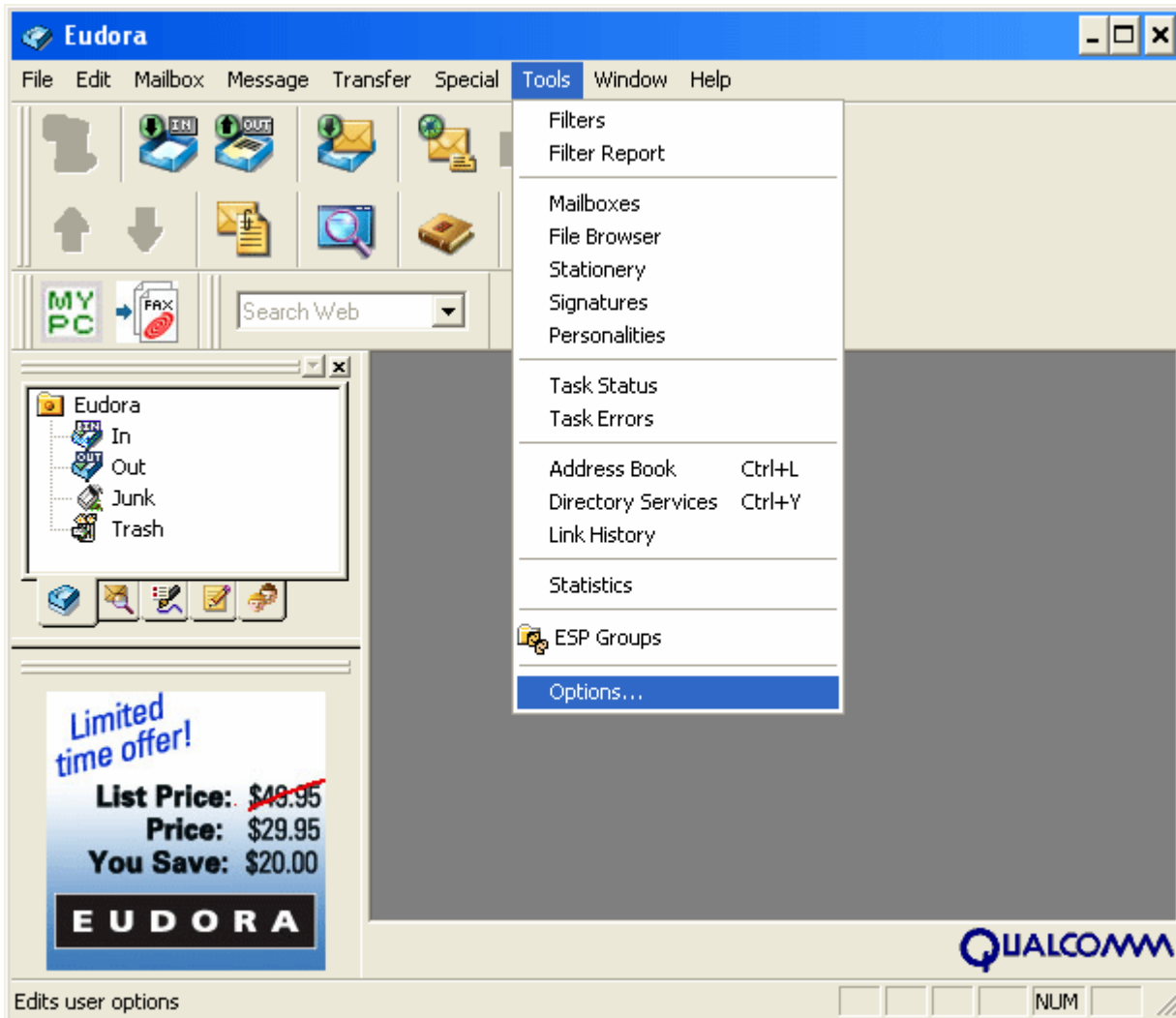


How to update your Outgoing Mail Server (SMTP) - Eudora 6.2

Follow this tutorial **if you can receive your email but cannot send mail.**

Use it as well to simply **make sure your email program is configured optimally.**

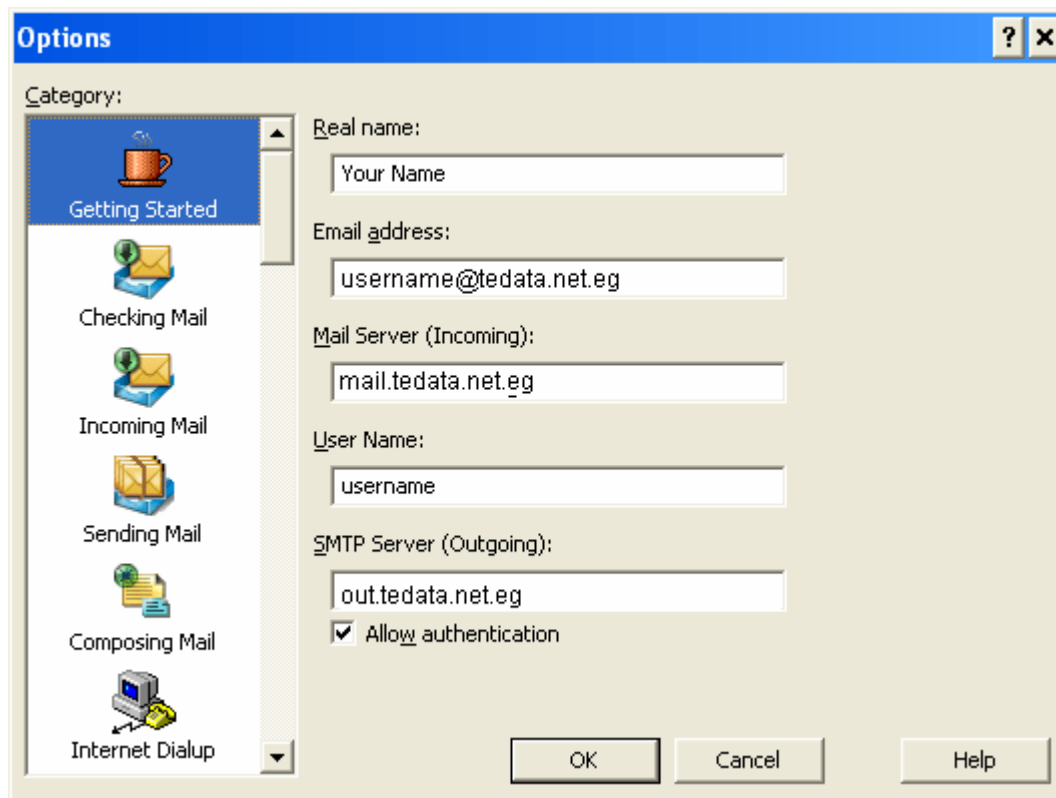
1 - Open Eudora, click on the **Tools** menu and choose the last entry - **Options**.



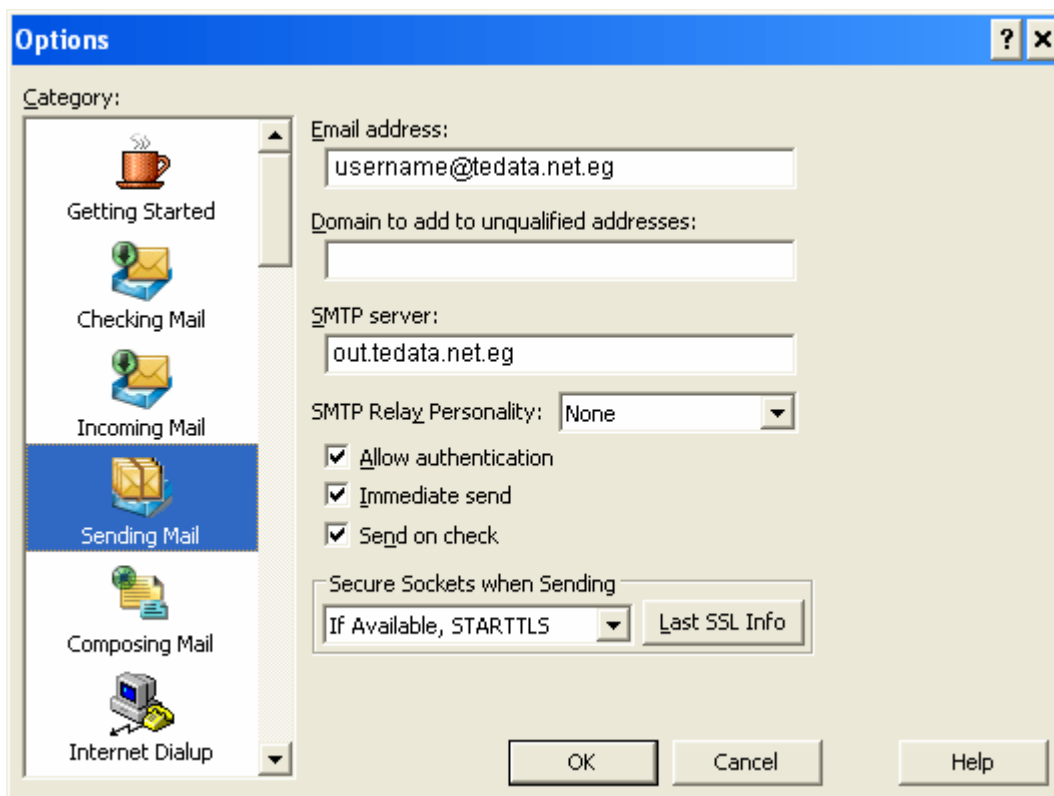
2 - The Options dialog box will pop up. Make sure you are under the **Getting Started** category (from the left button), and look at the bottom of the right side, where it says **SMTP Server (Outgoing)**.

Your SMTP server should be out.tedata.net.eg.

Make sure that the checkbox called **Allow Authentication is checked**. If it is not checked, please check it.



3 - Go to the **Sending Mail** category (from the left column). You should see this page:



Make sure everything is set as shown above. Pay attention to the checkbox named **Allow Authentication**, and make sure it **is checked**.

You should now be able to send out messages.

4 - Click the **OK** button to confirm your changes.



::: Copyright © 2007 . TE Data Support Team . All Rights Reserved :::

::: For Further Informations Call Us At 19777 :::

